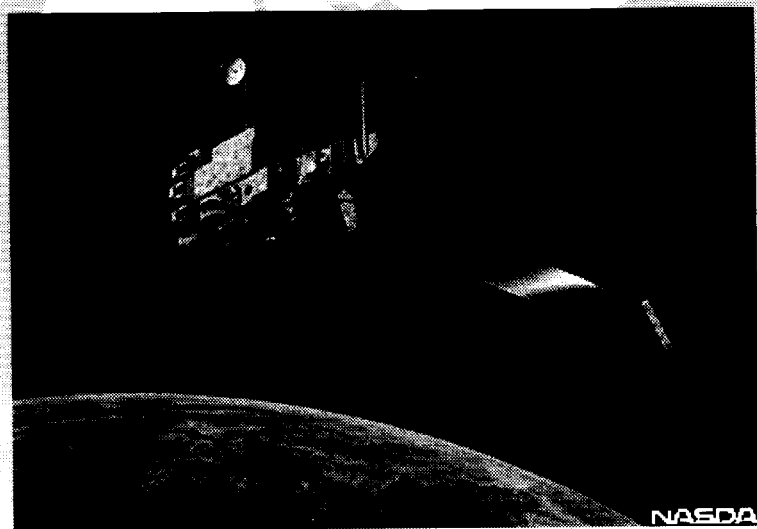


Preliminary results of ADEOS initial mission checkout



Haruhisa Shimoda
ADEOS Program Scientist

+

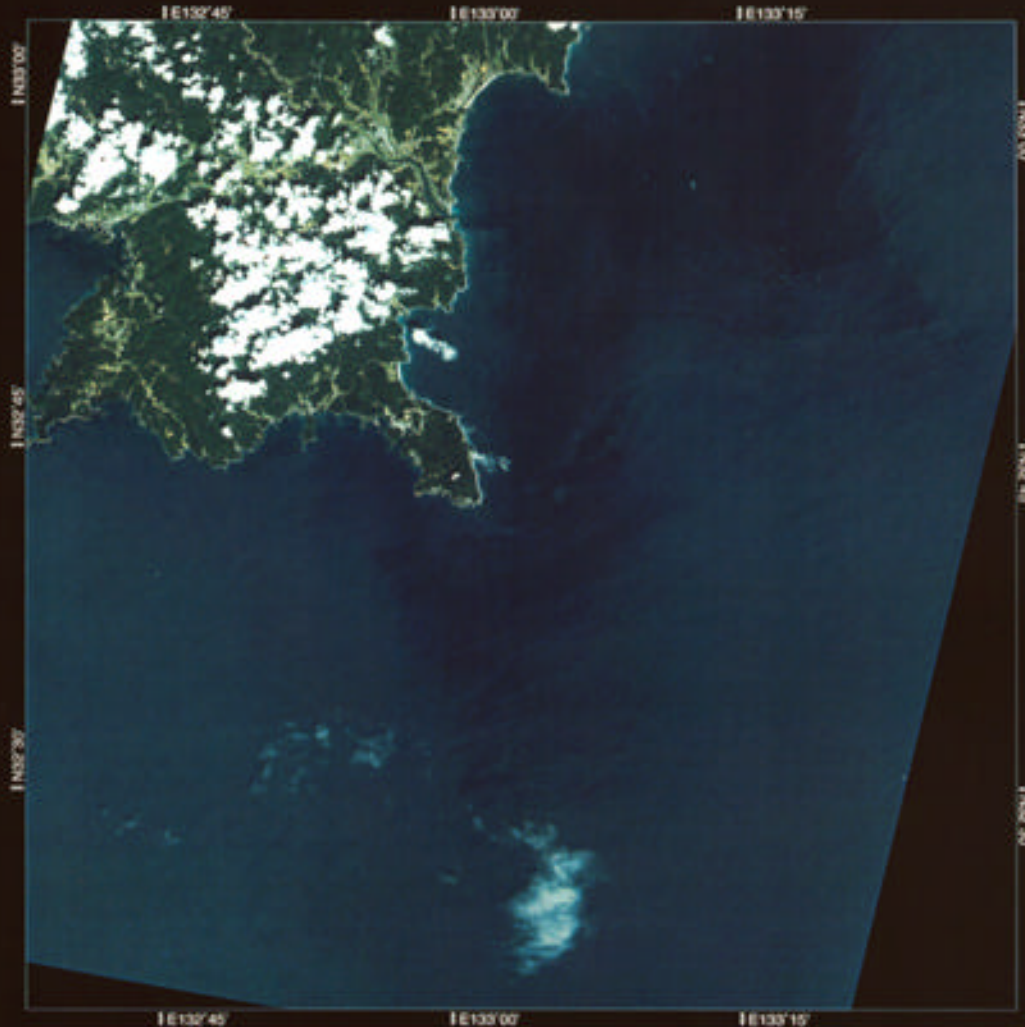


ADEOS
Level 1B2

AVNIR Mu
UTM CC

Sep 2/1996 D +1330:+330
16m Band: 1 2 3

+



C N32'42'/E133'03'
ID: 19960902-021137

POINT: -0.18°
OP: GD

INCID: 0.6°L
GAIN: NNN

SUN EL62° AZ150°
HEOC

COMP: F
ALT: 797km



+

NASDA RETAINS OWNERSHIP OF DATA

processed on Sep 2/1996

exposed on Sep 2/1996

+

GLI CAL/VAL Network Modules

Aerosol ground/shipborne modules

Polar nephelometer

Lidar

Shortwave/longwave radiometer system

Optical buoy

Ocean color shipborne module

In situ spectrometer system

GPS camera system

In situ vegetation monitoring system

Cryospheric microphysics system

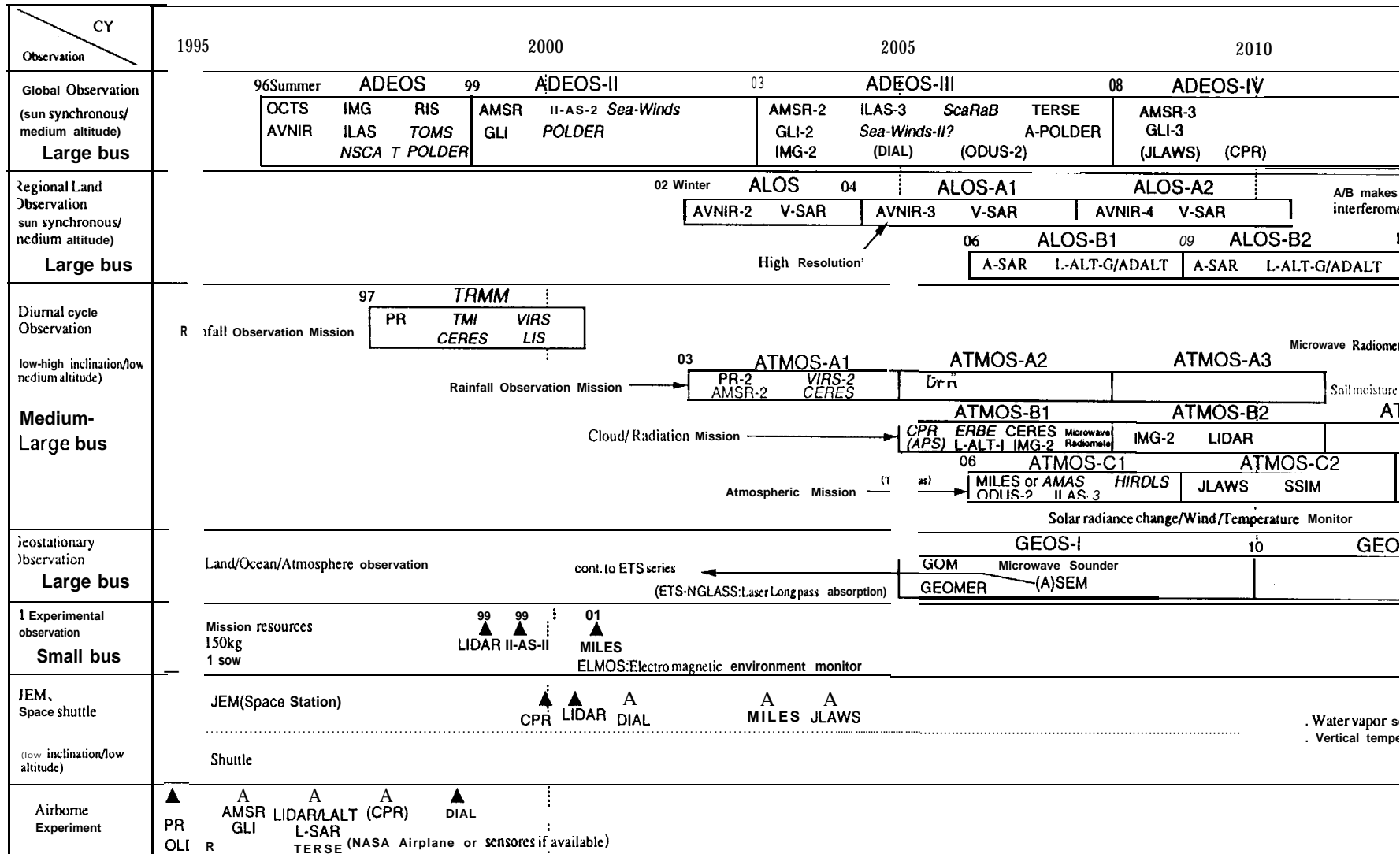
Laser sizing system

GLI PI Team

		MODIS
Atmosphere:	12	(1)
SRB	: 2	
Ocean	: 7	(1)
Land	: 11	(1)
Cryosphere:	5	

Japanese Scenario of Long Term Earth Observation(Draft)

NASDA/EOPD Sept.7, 1995

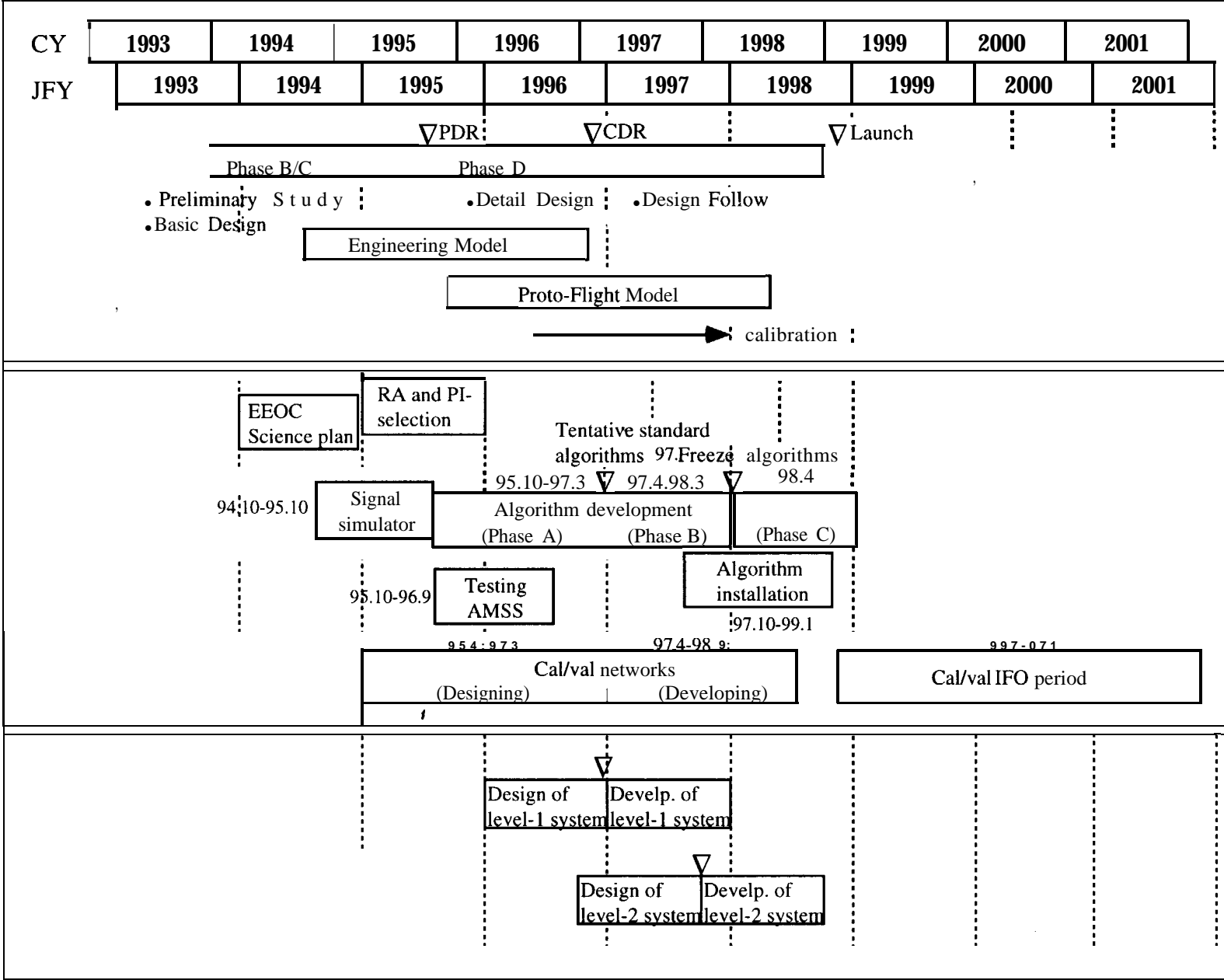


Japanese sensor to foreign satellites.
 : ODUS-->EOS/CHEM(2002)
 TERSE-->EXPLORER

Foreign sensors to Japanese satellites
 : AMAS(D) -->ATMOS-C1
 APS(Au) -->ATMOS-B1
 CPR(US, GB) -->ATMOS-B1
 DPR(F) -->ATMOS-A2

: ScaRaB -->ADEOS-III
 ERBE --> ADEOS-III
 IASI -->ADEOS-III

Schedule for the GLI Project



ADEOS Web sites

URL :

<http://www.nasda.go.jp>

: Launch information and press inform (NASDA main web site)

<http://www.eoc.nasda.go.jp>

: ADEOS satellite, ground segment inform. and sample (first) images

<http://www.eorc.nasda.go.jp>

: ADEOS research inform.



Home Page on WWW

EORC

<http://www.eorc.nasda.go.jp>

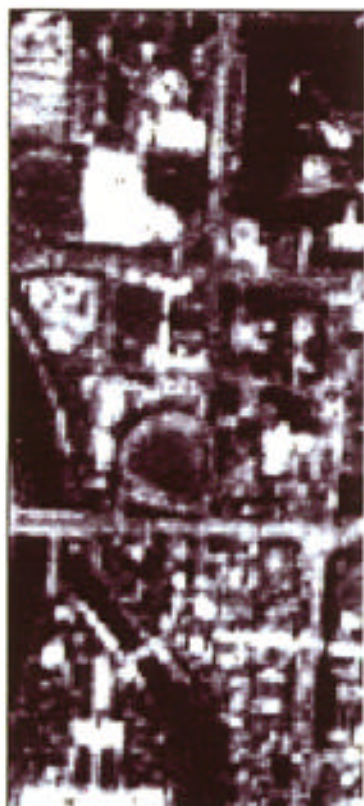
ADEOS

<http://mentor.eorc.nasda.go.jp/ADEOS/index.html>

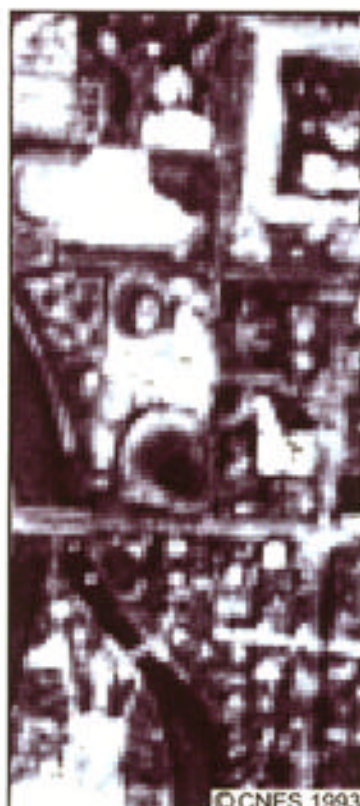
地球観測衛星に搭載されている光学センサの画像比較

観測地域：広島市街中心部

500m



ADEOS/AVNIR/Panchromatic
観測日 1996年09月05日
ポインティング角 18.76度



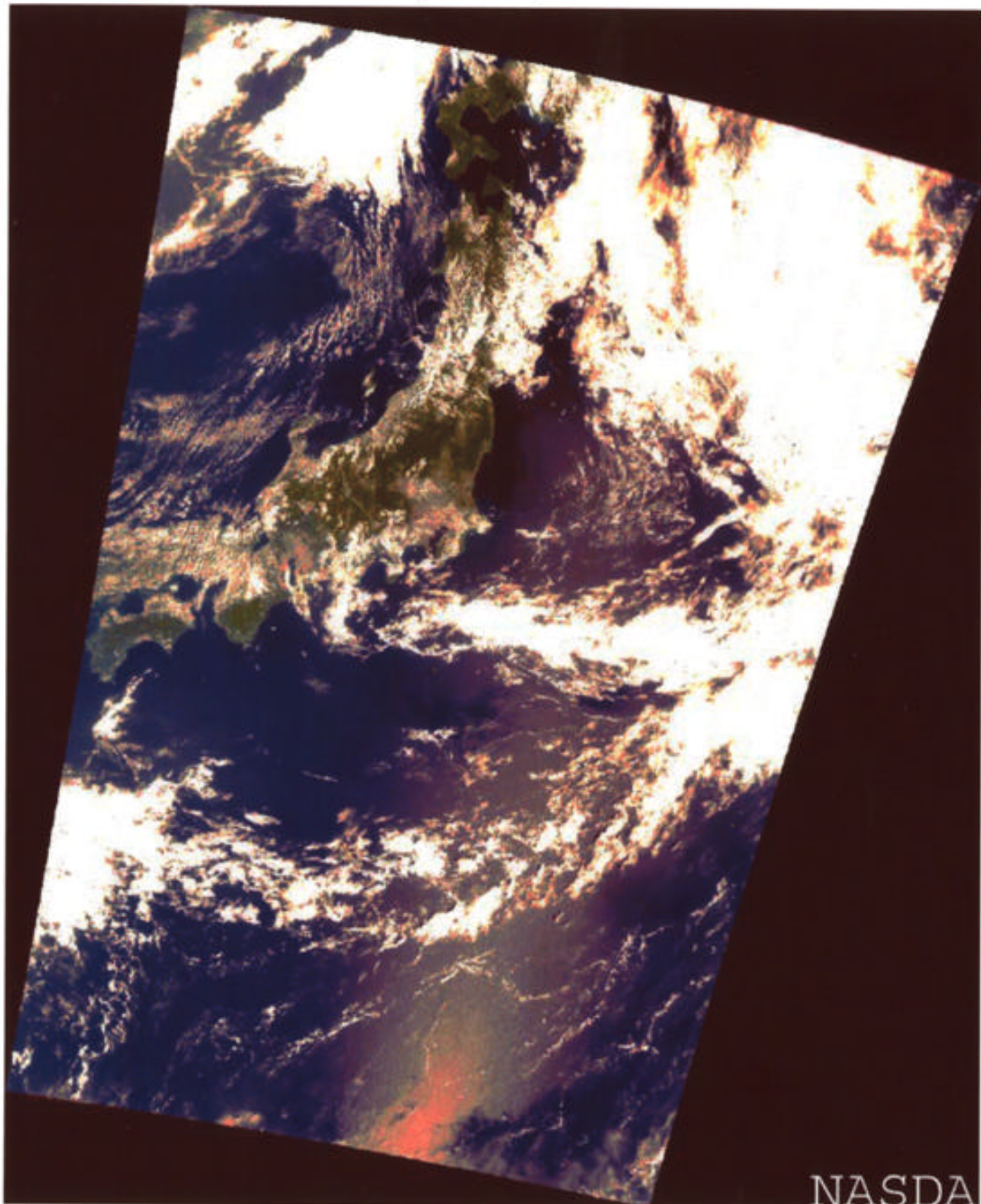
SPOT-2/HRV/Panchromatic
観測日 1993年04月20日
ポインティング角 16.36度



JERS-1/OPS
観測日 1992年12月19日

**Ocean Color and Temperature Scanner (OCTS)
Visible and Near-infrared Region (VNIR)**

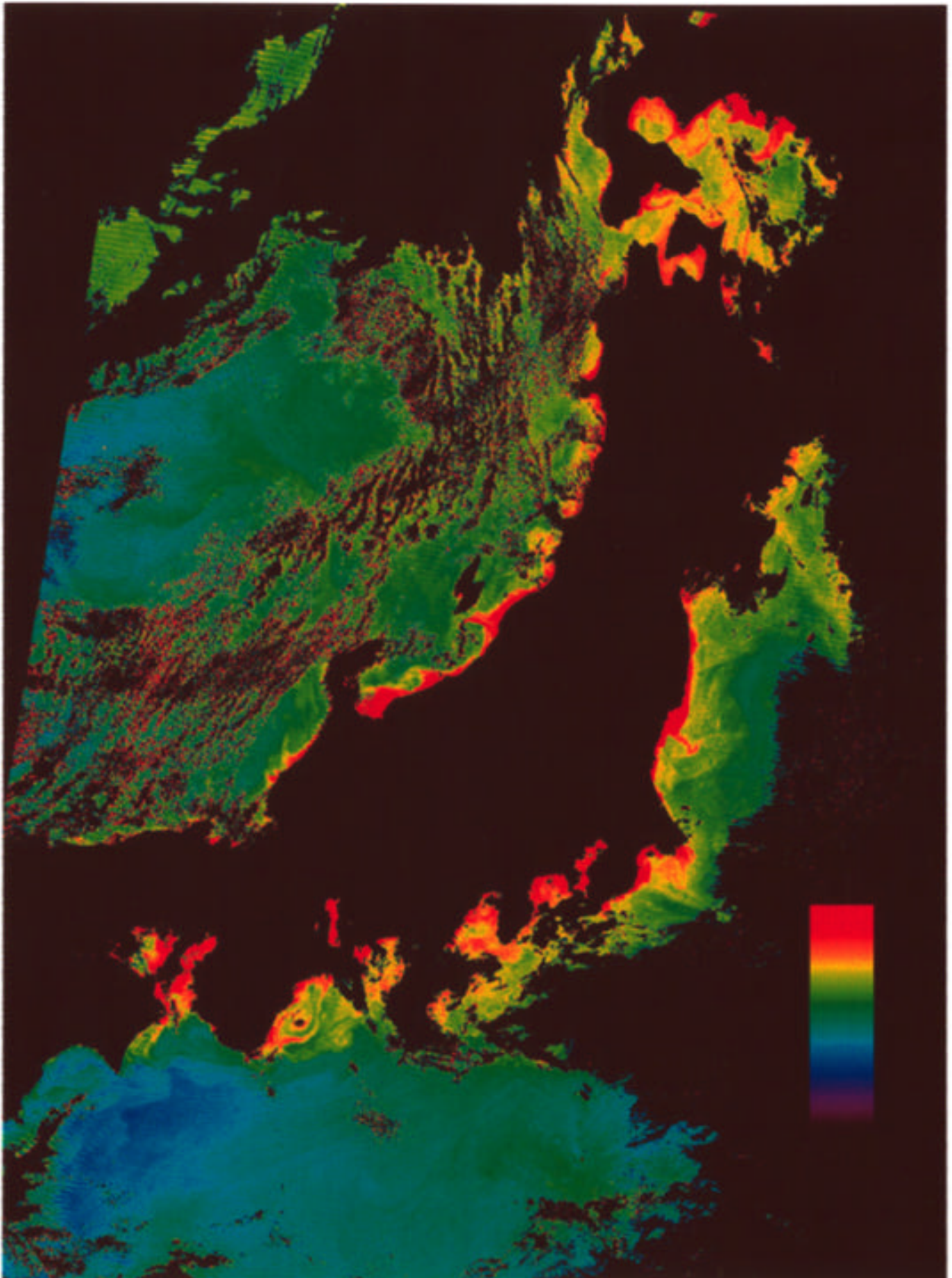
September 3, 1996

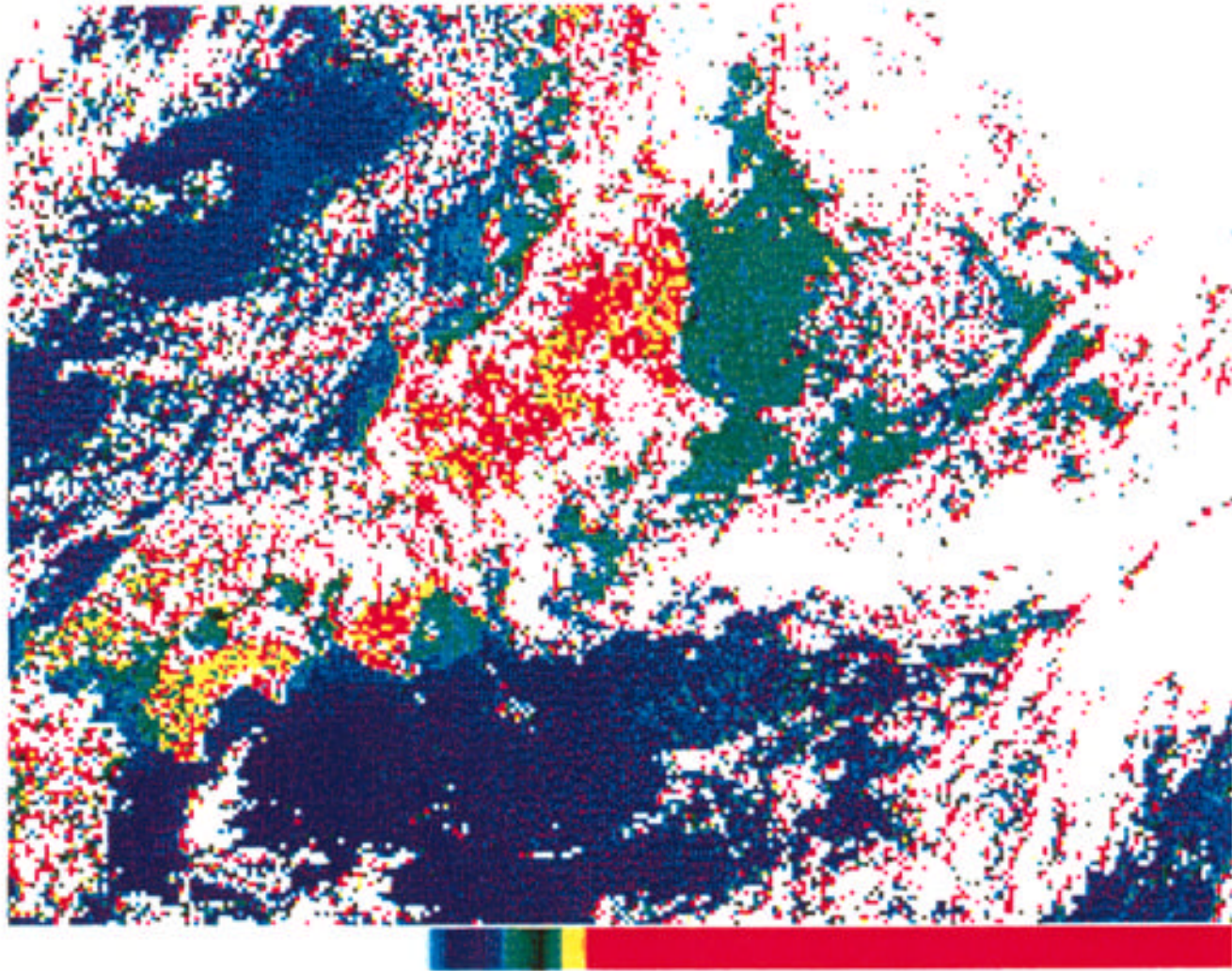


NASDA

ADEOS / OCTS Chlorophyll - a

September 3, 1996

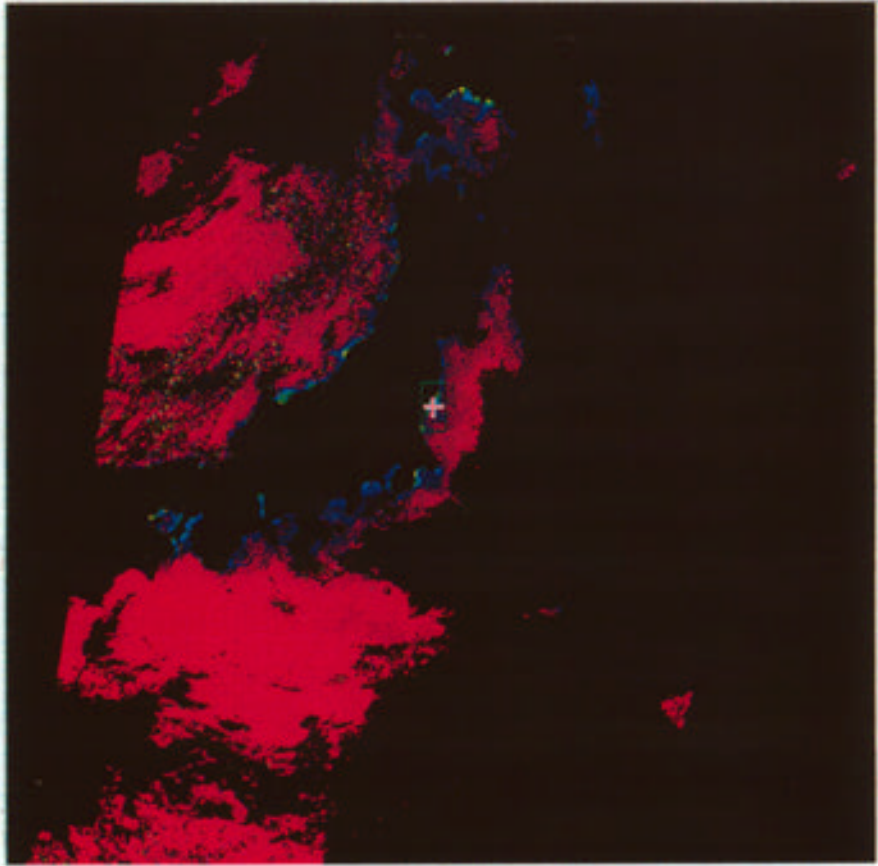




画像4 OCTS粗画像

Image Viewer -- Overview

System View Options Help



VO Id: N2491905 Observation Date: 19950204
 Satellite Type: ADEOS Sensor Type: OCT
 RSP Path: 57 Title: 0
 Latitude: 34.131 Longitude: 141.008

Bands: **napchlor** Res: 5:1


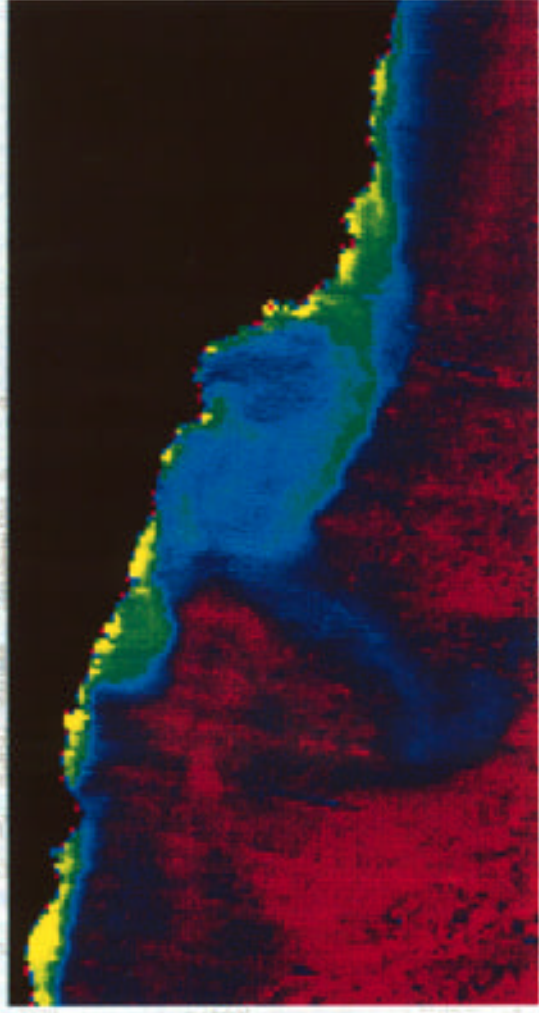


Image Viewer - Zoom

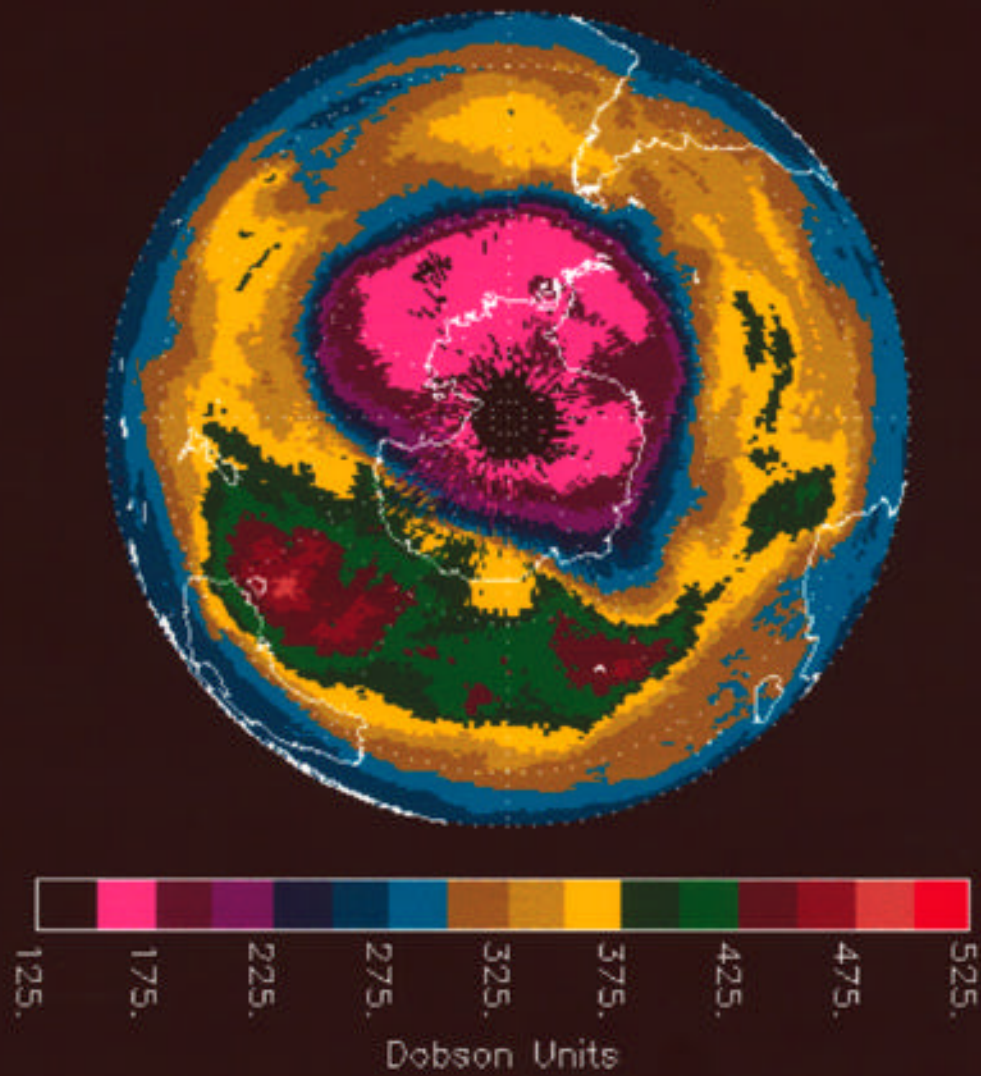
View



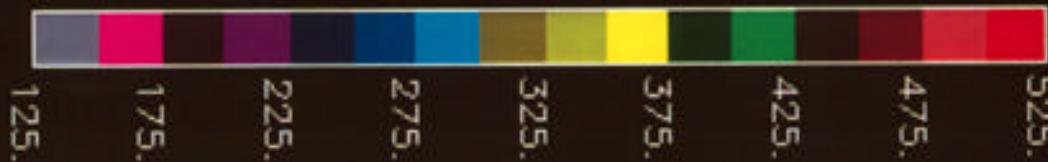
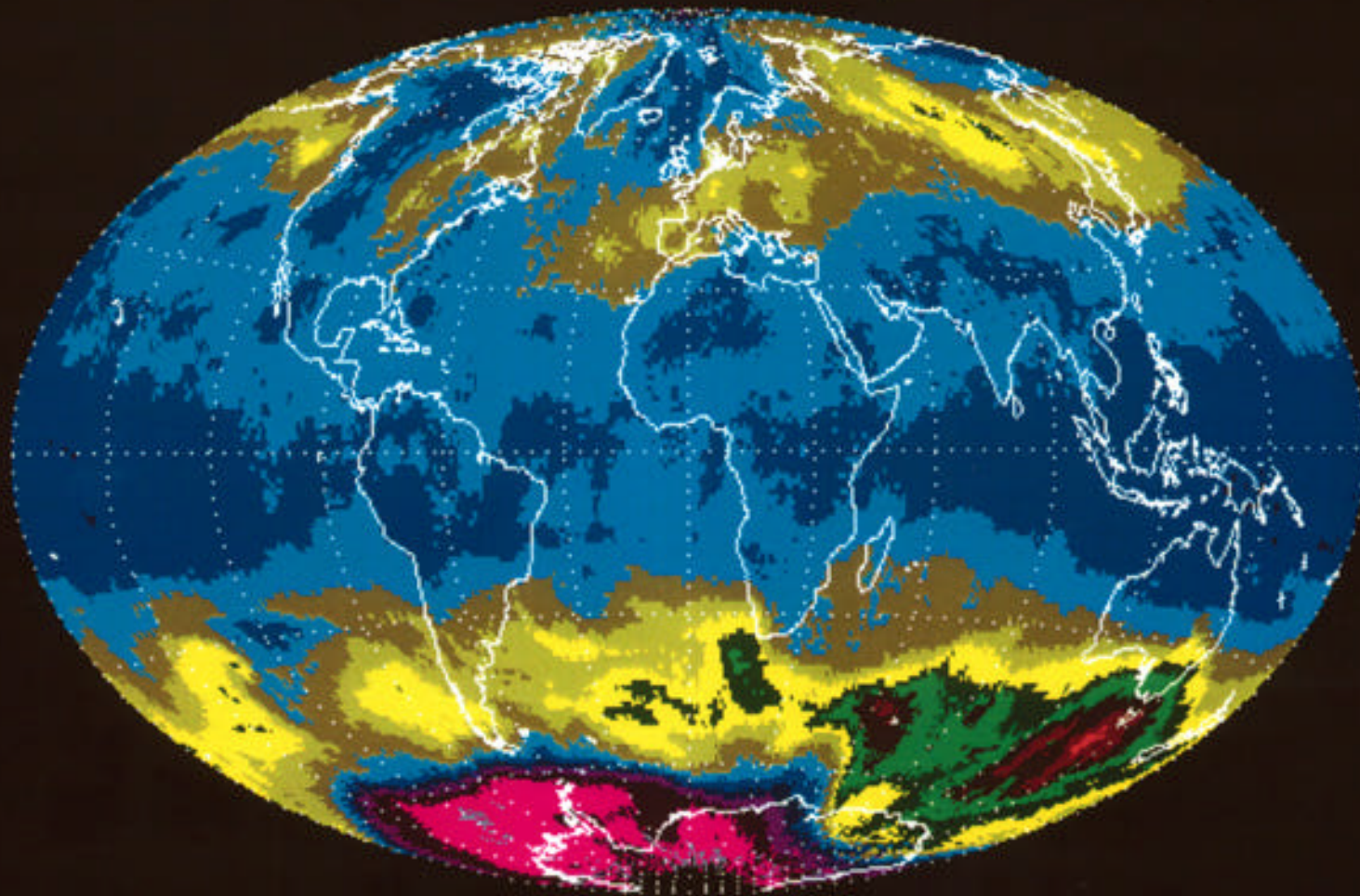
VO Id: N2491905 Res: 1:4

Bands: **napchlor**

ADEOS TOMS Total Ozone for September 12, 1996



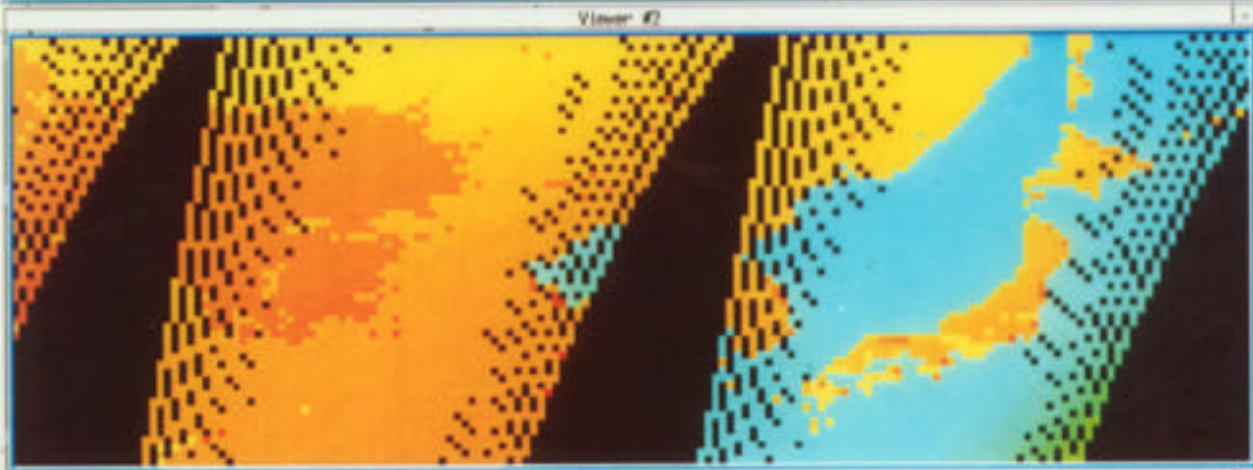
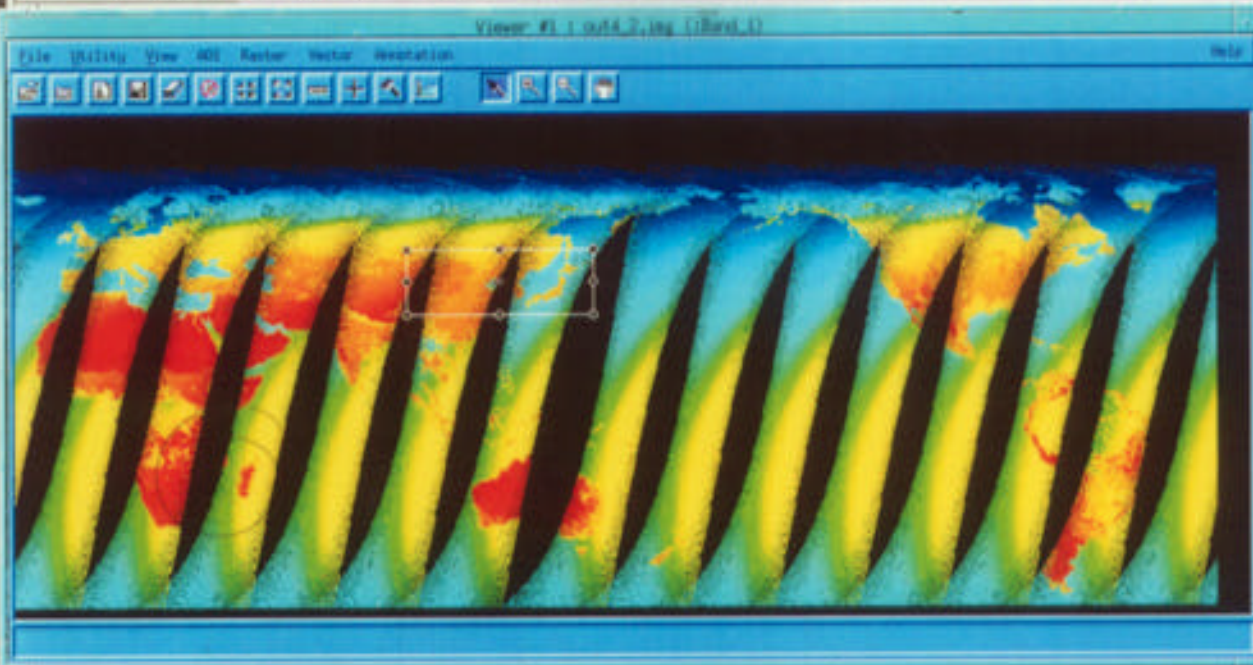
ADEOS TOMS Total Ozone for September 12, 1996



Dobson Units

Session Utility Help

Viewer Catalog Import Composer Interpreter Classifier Master Vector Raster Perspective



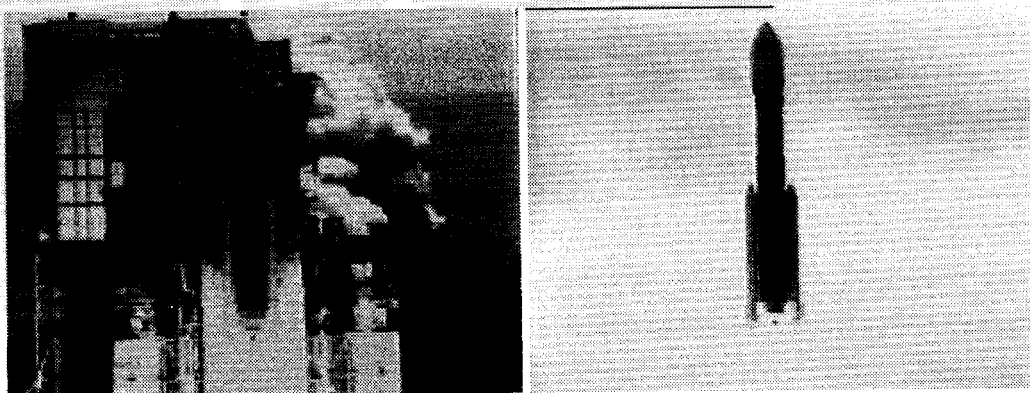
Raster Attribute Editor - out4_7.img (1)

File Edit Help

Row	Value	Histogram	Color	Quantity
1	5,62695	913	Blue	1
2	5,14496	913	Blue	1
3	4,06297	944	Blue	1
30	5,10000	929	Blue	1
31	5,89899	1054	Blue	1
32	5,21699	1107	Blue	1
33	5,7541	1170	Blue	1
34	7,25211	1181	Blue	1
35	7,77012	1311	Blue	1
36	5,38013	1511	Blue	1
37	5,84813	1550	Blue	1
38	5,32414	1764	Blue	1
39	7,84215	1871	Blue	1
40	10,360	1920	Blue	1
41	10,878	1771	Blue	1
42	11,396	1828	Blue	1
43	11,914	1833	Blue	1
44	12,432	1833	Blue	1
45	12,950	1854	Blue	1
46	13,468	1979	Blue	1
47	13,986	2028	Blue	1
48	14,504	2134	Blue	1
49	15,022	2190	Blue	1
50	15,540	2225	Blue	1
51	16,058	2272	Blue	1
52	16,576	2319	Yellow	1
53	17,094	2865	Blue	1
54	17,612	3019	Blue	1
55	18,130	4182	Blue	1
56	18,648	4518	Blue	1
57	19,166	4866	Blue	1
58	19,684	5008	Blue	1
59	20,202	5257	Blue	1
60	20,720	5629	Blue	1
61	21,238	6144	Blue	1
62	21,756	6934	Green	1
63	22,274	7409	Green	1
64	22,792	7869	Green	1
65	23,310	8843	Green	1
66	23,828	10686	Green	1
67	24,346	12306	Green	1
68	24,864	11174	Yellow	1
69	25,382	7518	Yellow	1
70	25,900	6771	Yellow	1
71	26,418	6292	Yellow	1

Launch

- ◆ successfully launched
 - ✦ at 10:53 a.m. (JST) / 01:53 a.m. (UT)
on August 17, 1996
 - ✦ from Tanegashima Space Center



Orbit

Apogee Altitude	804.6 km
Perigee Altitude	789.0 km
Orbit Inclination	98.625 degrees
Period	100.8 minutes
Local Time at Descending Node	10:41 a.m.
Recurrent Cycle	41 days

Satellite

- ◆ Solar paddle: successfully deployed
- ◆ Fuel: more than 10 years
- orbit control: once a month
- ◆ Battery: OK

Bus Instruments

◆ Data recorders

– HKDR, LMDR, MDR-1, MDR-2: OK

◆ AOCS: OK

◆ C&DH, DT: OK

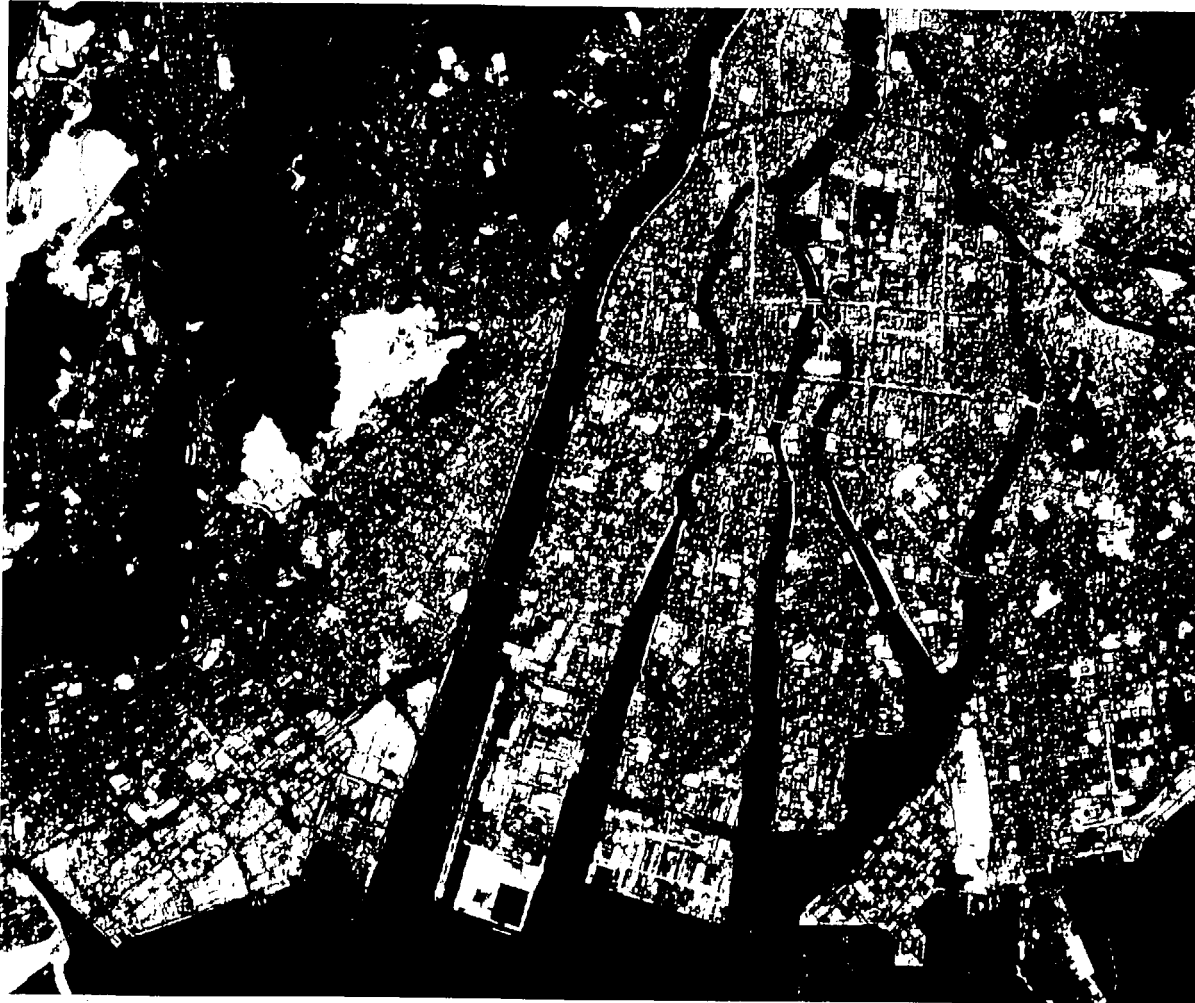
Sensor Status

- ◆ AVNIR: nominal operation
Mu, PA, pointing
- ◆ OCTS: nominal operation (VNIR)
tilt operation
earth shield deployed (TIR)
- DTL: nominal operation

Sensor Status

- ◆ NSCAT: nominal operation
- ◆ TOMS: nominal operation
- ◆ POLDER: nominal operation
- ◆ ILAS: nominal operation
- ◆ IMG: launch lock release
- ◆ RIS: launch lock release

+



ID: 19960905-022926 POINT: +18.76° INCID: 21.3° L SUN EL61° AZ159° COMP: 7
OP: D GAIN: N HEOC ALT: 797km

